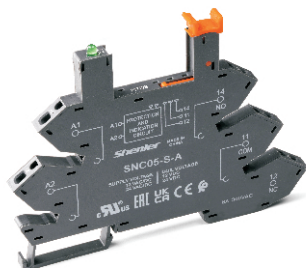
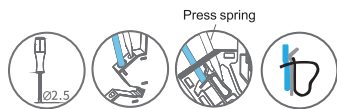


Characteristics






SNC05-S

Model No.	Input	Relay
SNC05-S-A	12~24V	12~24VDC
SNC05-S-B	48~60V	48~60VDC
SNC05-S-C	110V	60VDC
SNC05-S-DL	230V	60VDC

Characteristics

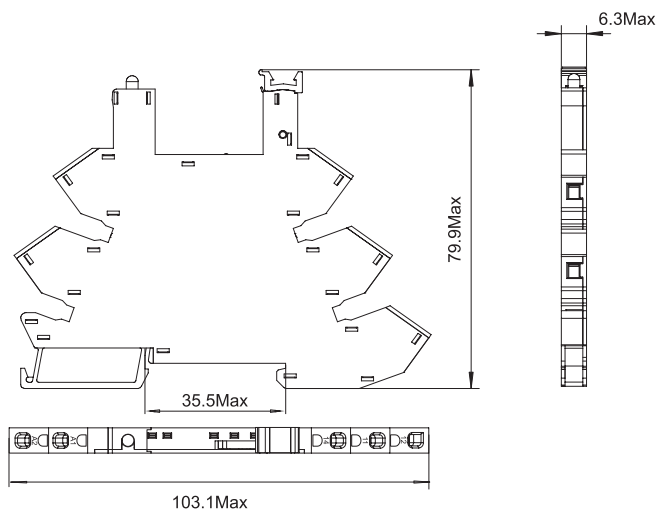
Nominal load	Current	A	8
	Voltage	V	300
Dielectric strength	Between coil and contact	V/min	4000
	Between contacts	V/min	2000
Wire size		AWG/mm ²	20-16/0.5-1.5
Ambient temperature		°C	-40~+85
Unit weight		g	25

Accessories

Bus jumper	ID tag	Partition plate
		
SN20B	SN64P	SN20S

*SNC05-S-DR optional, anti-interference function.

Dimensions (mm)



Connection Diagrams

