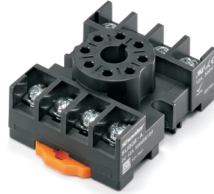


Characteristics

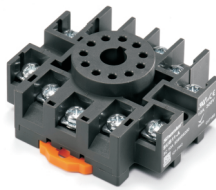


SUB08-A

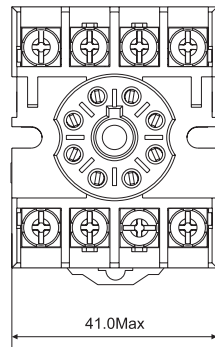


Type		SUB08-A	SUB11-A
Nominal load	Current	A	12
	Voltage	V	300
Dielectric strength	V/min	2500	
Max. tightening torque	Nm	1.0	
Wire size	AWG/mm ²	20-14/0.5-2.5	
Ambient temperature	°C	-40~+85	
Unit weight	g	37	50

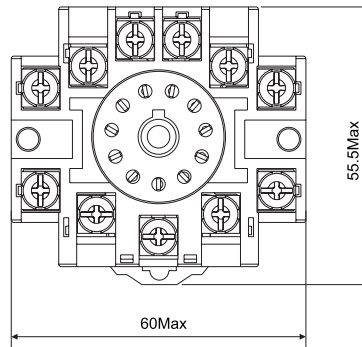
SUB11-A



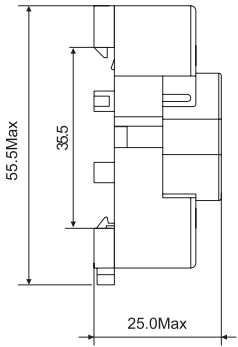
Dimensions (mm)



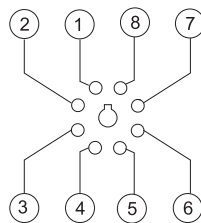
SUB08-A



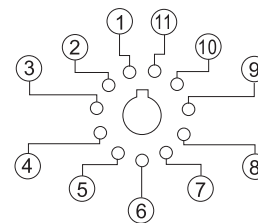
SUB11-A



Connection Diagrams



SUB08-A



SUB11-A